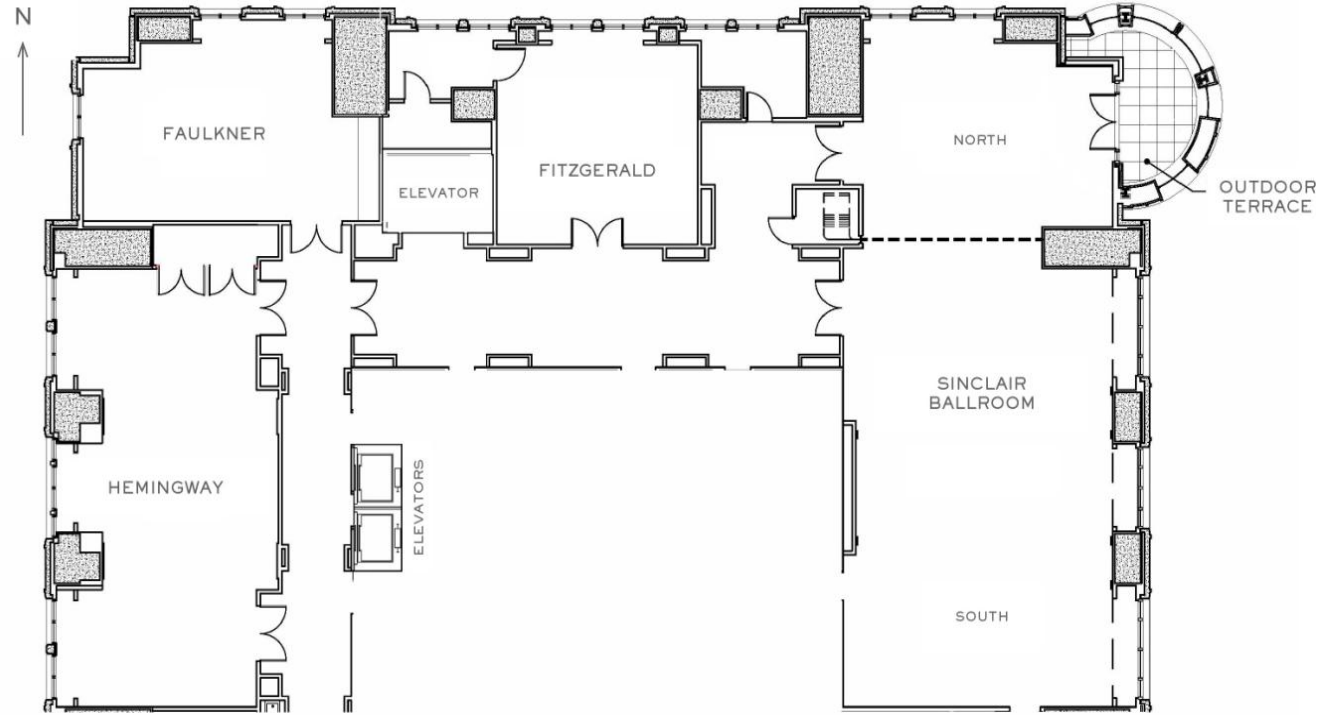




WALDORF
ASTORIA®
CHICAGO



MEETING CAPACITY



| Meeting Room | Dimensions | Height | Size | Conference | Classroom | Hollow Square | U-Shape | Theater | Reception | Banquet |
|--------------------|-------------|----------|--------------|------------|-----------|---------------|---------|---------|-----------|---------|
| Fifth Floor | | | | | | | | | | |
| Sinclair Ballroom | 31 X 74 ft. | 14.6 ft. | 2294 sq. ft. | 46 | 129 | 52 | 46 | 210 | 230 | 200 |
| Sinclair South | 31 X 49 ft. | 14.6 ft. | 1519 sq. ft. | 46 | 90 | 52 | 46 | 160 | 150 | 150 |
| Sinclair North | 25 X 31 ft. | 14.6 ft. | 775 sq. ft. | 22 | 30 | 30 | 24 | 60 | 60 | 50 |
| Hemingway Salon | 21 X 44 ft. | 14.6 ft. | 924 sq. ft. | 40 | 48 | 42 | 36 | 100 | 100 | 80 |
| Faulkner Salon | 22 X 35 ft. | 14.6 ft. | 770 sq. ft. | 22 | 30 | 30 | 24 | 60 | 60 | 50 |
| Fitzgerald Salon | 20 X 23 ft. | 14.6 ft. | 460 sq. ft. | 16 | 27 | 28 | 20 | 40 | 40 | 40 |